

PROACT.®

REFERENCE : PA330

SIZES : XS_S_M_L_XL_XXL_3XL_4XL

COMPOSITION :

Main fabric : Nylon oxford with PU coating 120 100%polyamide

Main fabric : Nylon oxford with PU coating 120 For top

contrasted yoke 100%polyamide

Main fabric : Nylon oxford with PU coating 120 For bottom

contrasted yoke and left sleeve yoke. 100%polyamide

WEIGHT :

Main fabric : 120gsm

Main fabric : 120gsm

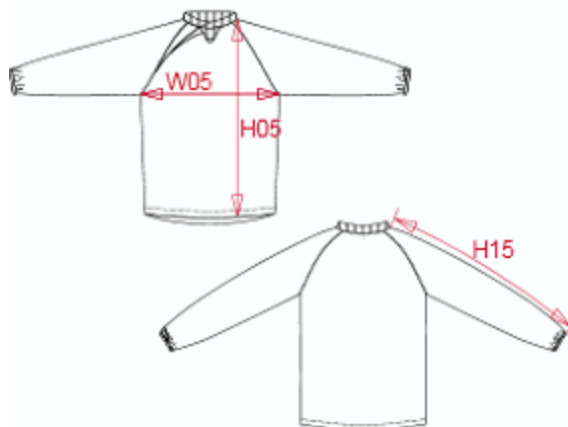
Main fabric : 120gsm

FABRIC CONSTRUCTION AND FINISHING :

500mm WP With PU coating

ARTICLE WEIGHT :

240gr/pc



DESCRIPTION												COLORS		PANTONE SERIGRAPHIE	
Français : Sweat de pluie English : Rain sweat Nederlands : RAIN SWEATER Deutsch : REGEN-SWEATSHIRT Español : SUDADERA PARA LLUVIA Italiano : FELPA ANTIPIOGGIA Português : SWEAT PARA A CHUVA												Black / White / Storm grey		Black / White / Cool gray 10C	
												Sporty red / Black / Storm grey		168C / Black / Cool gray 10C	
												Sporty navy / White / Storm grey		295C / White / Cool gray 10C	
												Dark green / Black / Storm grey		336C / Black / Cool gray 10C	
												Sporty r.b / Black / Storm grey		300C / Black / Cool gray 10C	
MEASUREMENT															
Description	Tol +/-	Tol +/- Taille max	XS	S	M	L	XL	XXL	3XL	4XL					
H05 Hauteur totale devant / Front total height			73,50	75,50	77,50	79,50	81,50	83,50	85,50	88,30					
W05 1/2 largeur poitrine / 1/2 chest width	2,5%	2,0%	53	56	59	62	65	68	71	75					
H15 Longueur manche / Sleeve length			76,50	79,30	82,10	85	87,90	90,80	93,60	96,80					
CARE LABEL															
PACKING															
Box	50 pcs / box XS-S => L:57cm W:41cm H:18cm GW:11kg NW:10kg M-L => L:63cm W:44cm H:18cm GW:13kg NW:12kg XL-XXL => L:69cm W:47cm H:18cm GW:14.5kg NW:13kg 3XL-4XL => L:76cm W:50cm H:18cm GW:15.5kg NW:14kg														